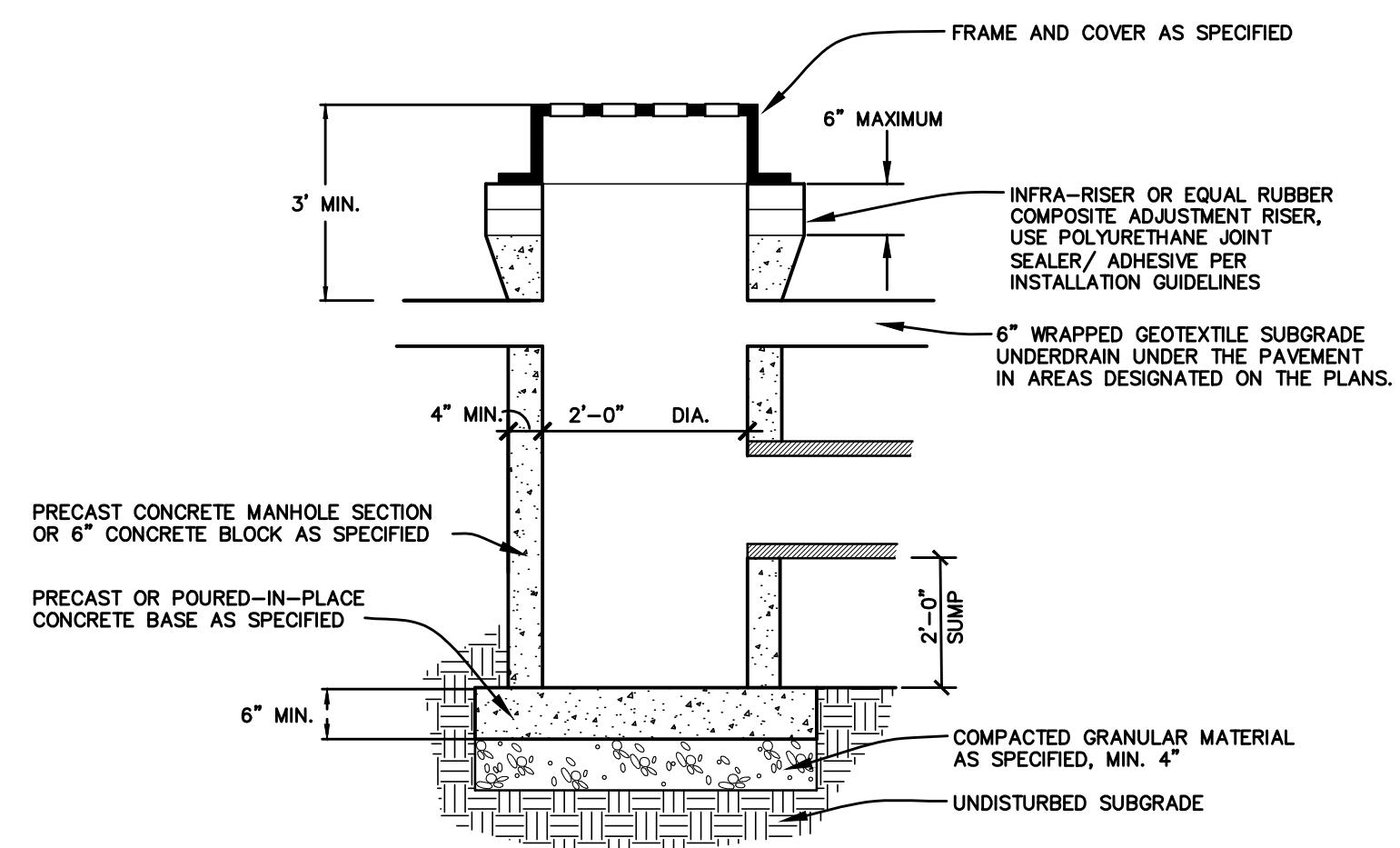


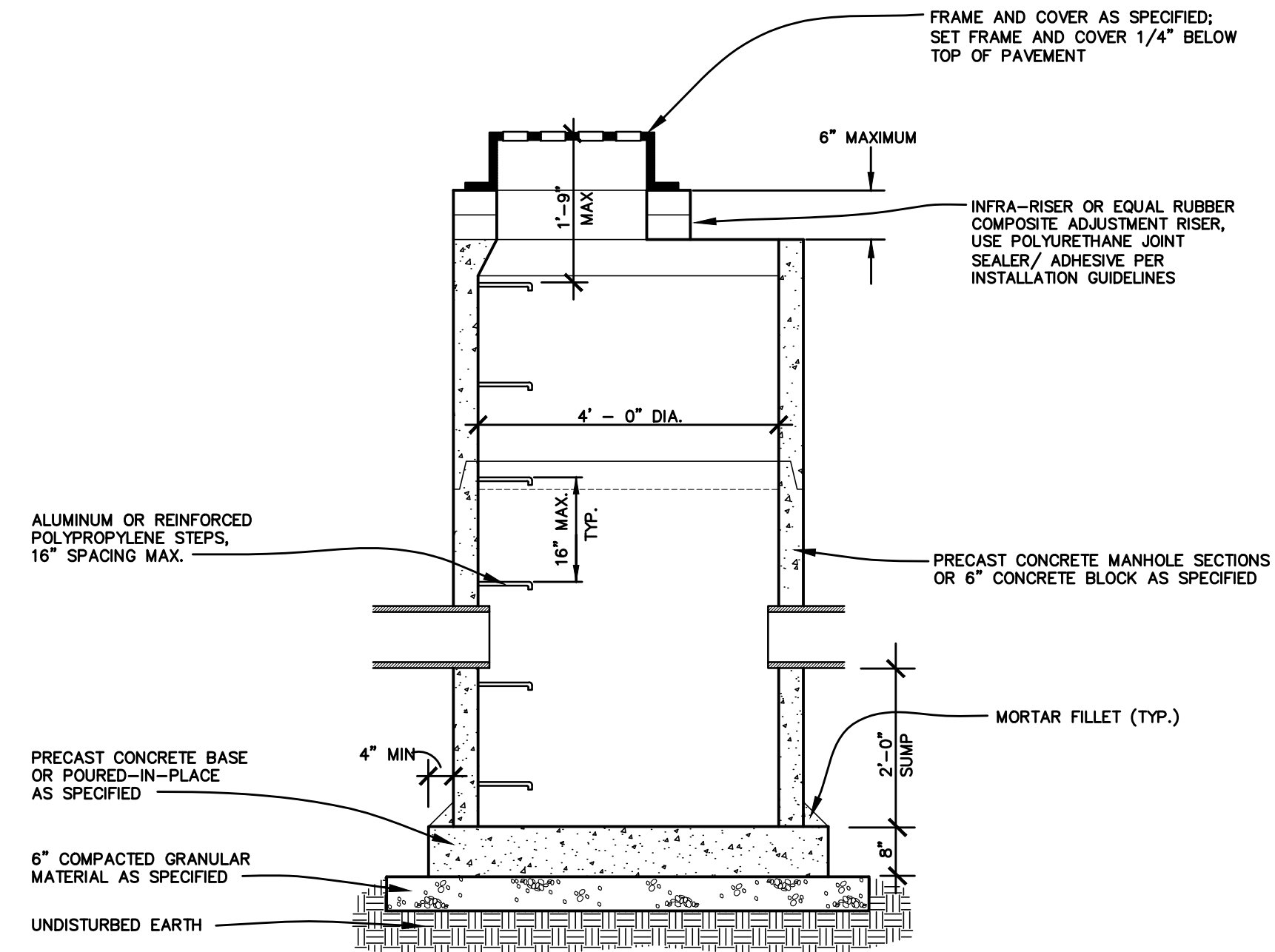
2' DIAMETER CATCH BASIN

NO SCALE

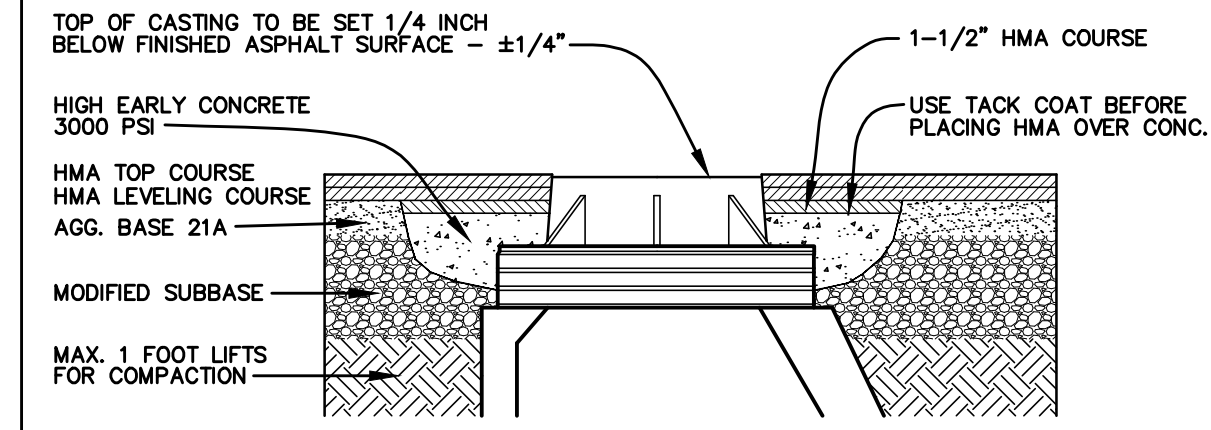


4' DIAMETER CATCH BASIN MANHOLE

NO SCALE

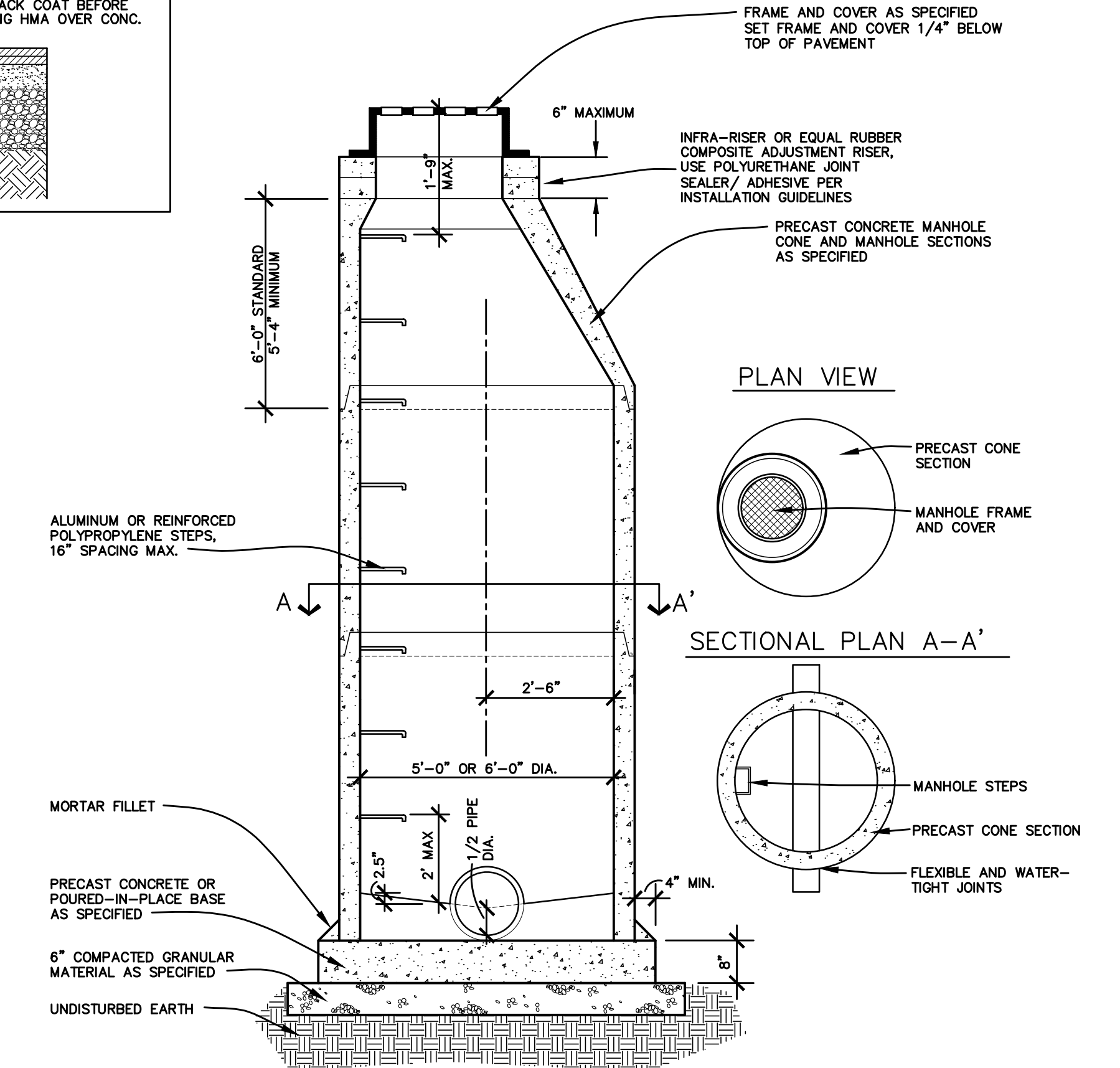


TYPICAL MANHOLE COVER INSTALLATION

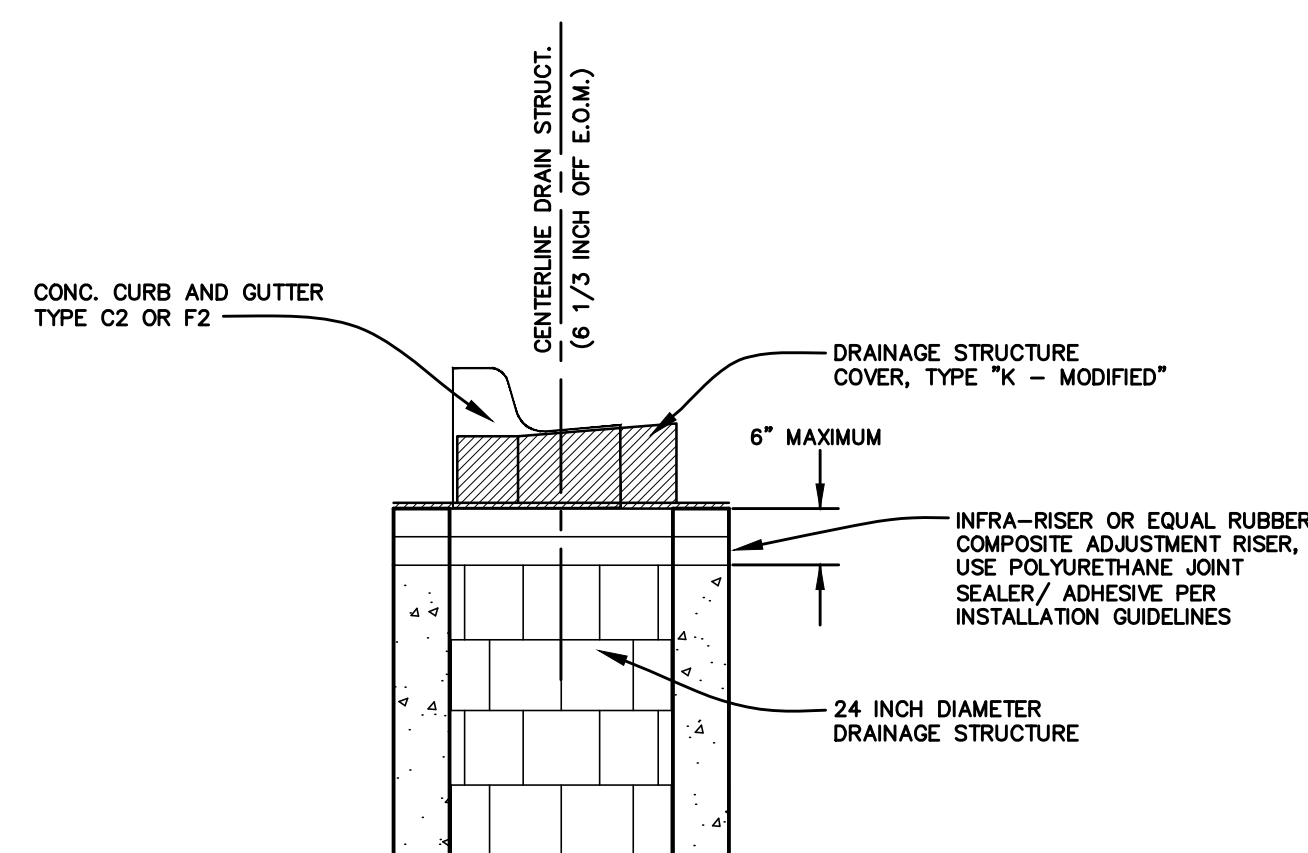


4', 5', OR 6' DIAMETER MANHOLE

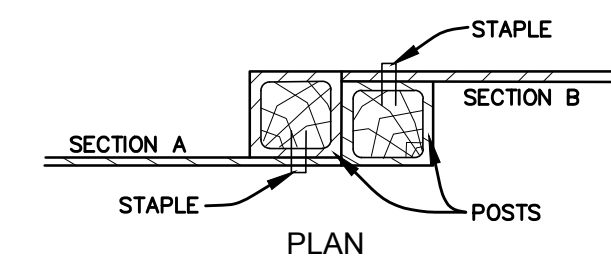
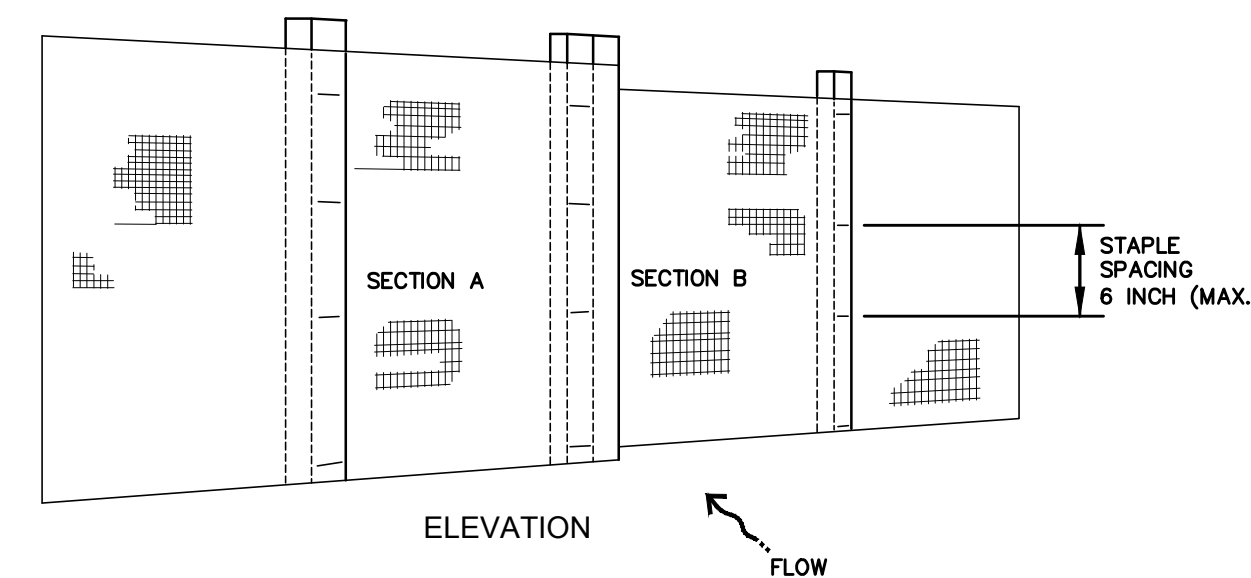
NO SCALE



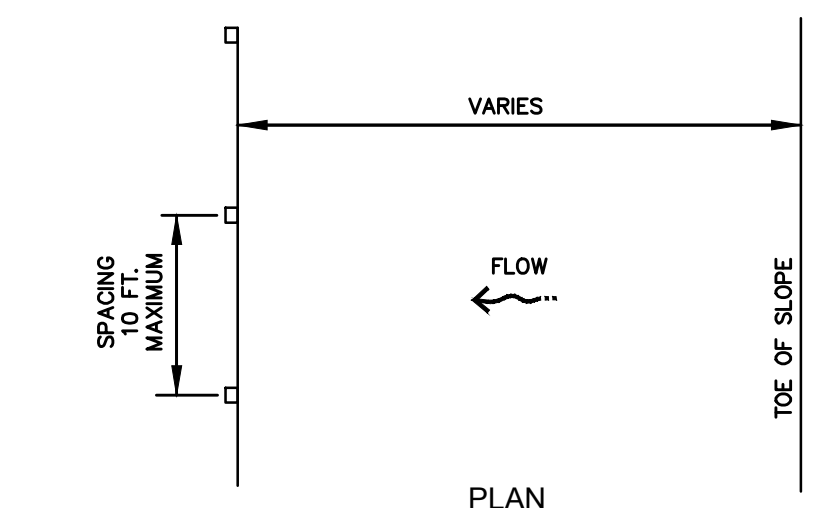
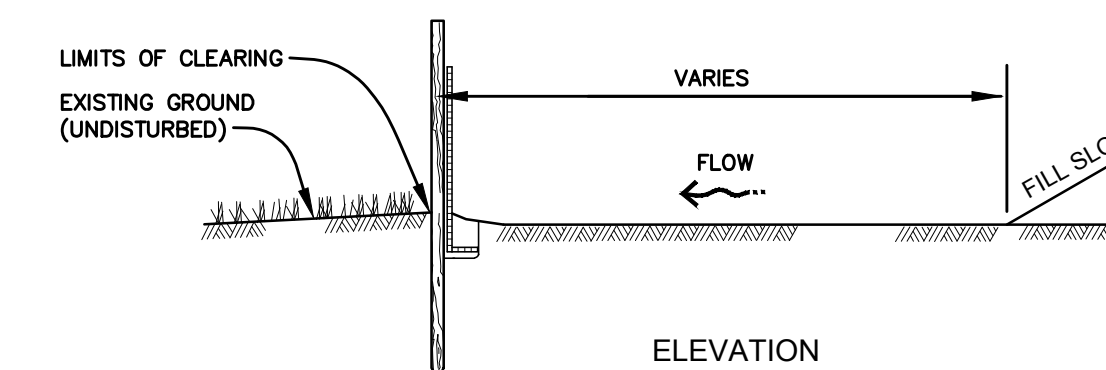
CATCH BASIN DETAIL FOR F2 CURBING



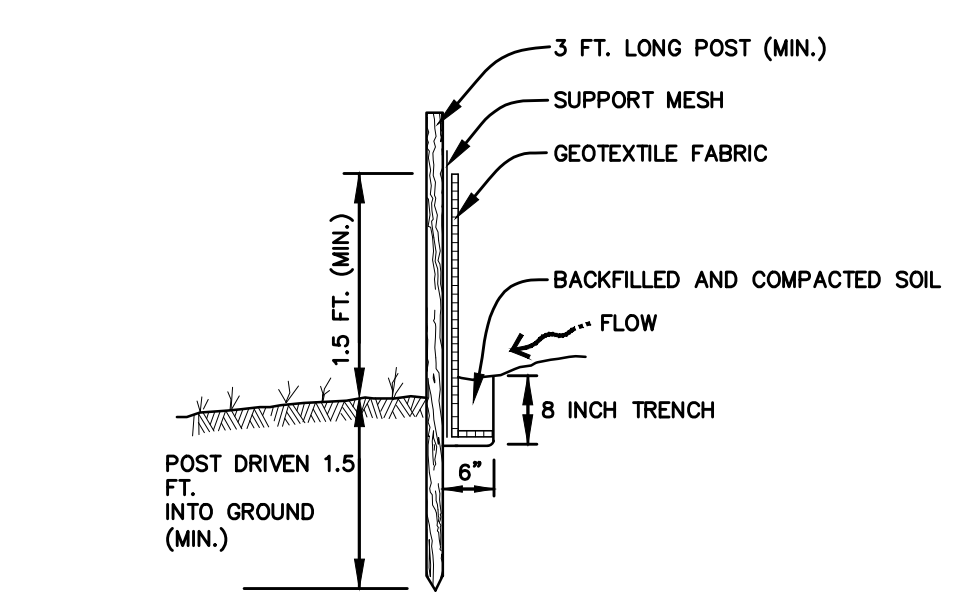
STANDARD DETAIL FOR SILT FENCE INSTALLATION



JOINING TWO ADJACENT SILT FENCE SECTIONS



SILT FENCE INSTALLATION AT TOE OF FILL



POST AND FABRIC INSTALLATION DETAIL

- NOTE:
1. DIMENSIONS NOT LABELED ARE IN INCHES
 2. ALTERNATE PRE-ASSEMBLED SILT FENCE OPTIONS WILL BE ALLOWED AS LONG AS SPECIFIED DIMENSIONS ARE SATISFIED. FOLLOW MANUFACTURER'S INFORMATION FOR INSTALLATION PROCEDURES.

Michigan's One-Call Utility Notification Organization

Three full days before you dig call the Miss Dig system 1-(800)-482-7171