

Volume No. 8, Issue No. 1, January/February 2018



# Marquette Matters



*A bimonthly publication produced by the City of Marquette*



Page 3

Message from Mike  
Land Development Code Project  
Winter Tax Information

Page 4

Meet the City Commission  
Committee Vacancies  
Holiday Closures  
Open Office Hours  
Rental Inspection Reminder

Page 5

Superior Theater Experience  
Monday Night Senior Skate  
Senior Arts Series

Page 6

AARP Presents E-Filing Tax Assistance  
2018 Elections

Page 7

2018 Noquemanon Ski Marathon  
Farmers Market Year End Report

Page 8

UP 200

Page 9

January Gallery Exhibits  
February Gallery Exhibits

Page 10

22nd Annual Art Awards Nominations  
Request for Award Design Proposals  
Creative Community Series

Page 11

Ice Safety

Page 12

2018 Curbside Recycling Schedule

## Inside this issue of *Marquette Matters*

### Contact us today

City of Marquette  
City Hall  
300 W. Baraga Ave.  
Marquette, MI 49855

For more information, email  
[marquettematters@marquettemi.gov](mailto:marquettematters@marquettemi.gov)  
or call City Hall at 906-228-0435

Visit our website at  
[marquettemi.gov](http://marquettemi.gov)

Past issues of *Marquette Matters* are available online at: [marquettemi.gov/newsletter/](http://marquettemi.gov/newsletter/)  
While there, you can also join the digital mailing list for *Marquette Matters*.

### Annual Report

The 2016-17 Annual Report from the City of Marquette can be found at:

<https://www.marquettemi.gov/how-do-i/view/annual-report/>

## Message from Mike

In each issue, the Marquette City Manager shares his comments in the form of a column. This issue, City Manager Mike Angeli (pictured right) shares comments on current goings of the City. City Manager Angeli can be reached at 906-228-0435.



Winter is upon us and the snow is already several inches (if not feet) deep. Marquette and the surrounding area, however, keeps moving forward and keeps pace with the seasons. It seems that no matter the season there is always something going on and something to do.

Let me give you a few examples. By the time you read this, we will most likely be in the middle of the Holiday season and the annual downtown New Year's Eve Ball Drop is probably something that you don't want to miss. It will be held in the 100 block of West Washington Street and attended by thousands of revelers. The annual Heikki Lunta Festival will be held in Negaunee on Jan. 19-20. The 131st annual Suicide Hill Ski Jumping Tournament in Ishpeming will be held on Jan. 23. The annual Noquemanon (Noque) Ski Marathon will be held Jan. 26. The race begins in Ishpeming and ends in Marquette. Last, but surely not least, the annual UP 200 and Midnight Run Dog Sled Race will be held Feb. 16-18.

These are but a few upcoming events as I'm sure there are many more. I would suggest going to the website [Marquette365.com](http://Marquette365.com) for a more complete calendar of events. The website, which is provided by the Chamber of Commerce and community supported, is still somewhat in its infancy but is updated frequently.

Now, go out and enjoy the winter because, before you know it, spring and summer will be here with another list of events that just seem to keep coming.



## Land Development Code Project

The Land Development Code (LDC) project, a major update to the City's land use codes, has been underway since the kick-off open house meeting on June 20 and the first draft of the new document is nearing completion. The Zoning Ordinance, Sign Ordinance, Fence Ordinance and Subdivision Ordinance are all being amended into a new, more user-friendly document that will ultimately be available in an online format as well as a handbook.

There have been five presentations from the consulting team to both the Planning Commission and the Land Development Code Advisory Committee on draft sections of the LDC and the Planning Commission held ten work sessions during their regular meetings on the LDC project in 2017.

Once the first draft is completed, the consulting team will present a second draft that incorporates all the requested changes from the first draft reviews. Once the second draft has been reviewed and final corrections and other changes are completed, the LDC document will be released for public comment, followed by adoption proceedings by the Planning Commission and the



## Winter Tax Collection

The 2017 winter taxes are due at the City Treasurer's office by Feb. 14. Taxpayers can pay their taxes through this date without penalty. A three percent penalty applies to payments received between Feb. 15-28 and payments received after March 1 will be considered delinquent.

Taxpayers that have a deferment with the City will have until Feb. 14 to pay both their summer and winter taxes without interest.

City Commission. It is presently anticipated that the second draft review will be completed by April and the public review of the final draft of the Land Development Code will occur in May. This project is part of the Michigan Association of Planning's Coastal Resilience Initiative and financial assistance for the project was provided, in part, by the Michigan Coastal Zone Management Program, Office of the Great Lakes, Department of Environmental Quality, through a grant from the National Oceanic and Atmospheric Administration.



**Mayor  
Tom Baldini**  
(h) 906-228-9579  
[tbaldini@marquettemi.gov](mailto:tbaldini@marquettemi.gov)



**Mayor Pro Tem  
Dave Campana**  
(h) 906-226-3621  
[dcampana@marquettemi.gov](mailto:dcampana@marquettemi.gov)



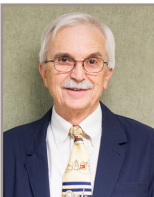
**Commissioner  
Sarah Reynolds**  
(c) 906-869-7583  
[sreynolds@marquettemi.gov](mailto:sreynolds@marquettemi.gov)



**Commissioner  
Peter Frazier**  
(c) 906-250-6600  
[pfrazier@marquettemi.gov](mailto:pfrazier@marquettemi.gov)



**Commissioner  
Mike Plourde**  
[mplourde@marquettemi.gov](mailto:mplourde@marquettemi.gov)



**Commissioner  
Fred Stonehouse**  
[fstonehouse@marquettemi.gov](mailto:fstonehouse@marquettemi.gov)

**Commissioner  
Jenna Smith**  
[jsmith@marquettemi.gov](mailto:jsmith@marquettemi.gov)

### City Commission Meetings

The Commission usually meets the second and last Monday of each month at 6 p.m. in the City Hall Commission Chambers at 300 W. Baraga Avenue, unless otherwise noted. Citizens are invited to attend.

#### Regular Meetings:

**Monday, Jan. 8, 2018, 6 p.m.**  
**Monday, Jan. 29, 2018, 6 p.m.**  
**Monday, Feb. 12, 2018, 6 p.m.**  
**Monday, Feb. 26, 2018, 6 p.m.**

Meetings are televised on local (Charter Cable) Channel 191. Additional meetings may be called, and changes may be made in accordance with the City Charter. Notices will be posted for such changes in compliance with Public Act 267 of 1976.

M  
E  
E  
T  
T  
H  
E  
C  
O  
M  
M  
I  
S  
S  
I  
O  
N  
E  
R  
S

## Interested in serving your community?

The City of Marquette has several openings for various volunteer advisory boards and committees.

Check out the City's website for an application and the most up-to-date vacancy information: [marquettemi.gov/commission/boards-and-committees/vacancies/](http://marquettemi.gov/commission/boards-and-committees/vacancies/)

• Arts and Culture Advisory Committee	One Opening
• Board of Zoning Appeals	Four Openings
• Brownfield Redevelopment Authority	Three Openings
• Harbor Advisory Committee	Four Openings
• Local Development Finance Authority	Four Openings
• Local Officers Compensation Commission	One Opening
• Marquette Area Wastewater Treatment Advisory Board	One Alternate Opening
• Marquette Housing Commission	One Opening
• Marquette Public Art Commission	Seven Openings
• Planning Commission	One Opening
• Presque Isle Park Advisory Committee	One Opening
• Traffic-Parking Advisory Committee	One Opening

## Holiday Closures

City offices located at Marquette City Hall, 300 W. Baraga Ave.; the Lakeview Arena, 401 E. Fair Ave.; the Municipal Service Center, 1100 Wright St.; and the Marquette Arts & Culture Center, 217 N. Front St. (Peter White Public Library) will be closed on Jan. 1-2 for the New Year's holiday, as well as Feb. 19 for the President's Day holiday. The Fire, Police and Public Works and Utilities Departments will remain open and staffed during these times.

## Manager Open Office Hours

City Manager Mike Angeli holds community office hours on the second Wednesday of each month, from 10 a.m. until noon in the main floor conference room of the Peter White Public Library. The next community office hours sessions are scheduled for Jan. 10 and Feb. 14.

The meetings are intended to provide informal opportunities to discuss issues within the community, and to give citizens a chance for direct dialogue with City staff about interests and concerns.

## Rental Inspection Reminder

As a reminder to all landlords/ property managers/ rental tenants, City Code requires that all rental properties within the City of Marquette be registered, inspected and certified. To verify if a property is registered or to receive a registration application, contact the Marquette City Fire Department by phone at 906-225-8596 or at their office located 418 S. Third Street, Marquette, MI. To print the application packet from the City website, go to: <https://www.marquettemi.gov/departments/fire/inspections/>

Certificates of compliance are not transferrable. When property ownership changes, it is the new owner's responsibility to register the property within 30 days of purchase or prior to tenants occupying the property. Failure to comply may result in a civil infraction citation being issued to the owner.



# Marquette Senior Center's Superior Theatre Experience

The New Year brings many opportunities for the City of Marquette Senior Center's Superior Theatre Experience program. This program will continue the Center's partnership with the Forest Roberts Theatre and Northern Michigan University's Communications and Performing Arts Department.

This program's purpose is to offer educational theater experiences to senior citizens in the community. Seniors in this program will be able to attend Forest Robert Theatre performances, auditions, rehearsals, technical and backstage tours, music and choreography rehearsals, flight staging and much more. In addition to attending behind-the-scenes experiences of upcoming productions, the program also offers the chance to observe theater classes throughout the semester. Some of the courses seniors will be able to join are: Acting 101, Intro to Design, Advanced Makeup, Theater Careers, Dialects and Stage Management.



The Forest Roberts Theatre will have four plays being performed this upcoming semester where participants will be able to attend and observe the technical and

artistic rehearsals. The first will be at the beginning of February during the Fringe Festival. This show will consist of an evening of three short plays, *The Valentine Fairy*, *The Complete Works of Shakespeare* and *Antigone*. In the spring, seniors can look forward to the main stage production of the Disney musical, *Tarzan*. In addition to working with NMU's Theatre department, the Superior



Theatre Experience will also be partnering with the Superior Arts Youth Theater for their spring production of *Peter Pan*. Tickets will also be available for this production along with rehearsal experiences.

The Superior Theatre Experience will continue to offer programming into the summer and fall of 2018 by partnering with local community theaters. This unique program offered to senior citizens in our community provides educational insight on how a play is produced, both technically and artistically from casting to performance. The Superior Theater Experience also offers biweekly acting and theater discussion classes with the Program

Coordinator Moire Embley on Mondays from 2-4 p.m. in the lower level of the Peter White Public Library. For more information and to sign up for upcoming experiences, classes and tickets, please contact the City of Marquette Senior Center at 906-228-0456.



## Monday Night Senior Skate

The Marquette Senior Center invites area skaters (Age 50 +) to Monday Night Senior Skate at Lakeview Arena. Skating hours are 7:30-9:20 p.m. and take place in the Olson Rink. We are pleased to announce there is an inventory of new skates available for use during these skating hours.



## Senior Arts Series

### Performing Arts

Senior Acting classes will take place on the second and third Mondays in January (Jan. 8 and Jan. 15) from 2-4 p.m. at the City of Marquette Arts and Culture Center. For February-April dates and events, or for more information, contact the Senior Center Office at 228-0456.

### Visual Arts

February classes will be offered on the first and third Tuesdays of the month from 1-3 p.m. and will take place at the City of Marquette Arts and Culture Center.

Tuesday, Feb. 6- Acrylic Painting with Gene Bertram

Tuesday, Feb. 20- Acrylic Painting with Gene Bertram

## AARP Presents E-Filing Tax Assistance



The Marquette Senior Center is partnering with the AARP to assist senior

citizens file State and Federal income taxes, as well as the Homestead Property Tax Credit and/or the Home Heating Credit. AARP volunteers will be available (by appointment only) at the Marquette Senior Center beginning in February. March appointments will open mid-February. Please call after Monday, Jan. 8 to make your appointment.

### Available Dates:

Friday, Feb. 2	10:00 am – 3:00 pm
Tuesday, Feb. 6	10:00 am – 3:00 pm
Friday, Feb. 9	10:00 am – 3:00 pm
Tuesday, Feb. 13	10:00 am – 3:00 pm
Friday, Feb. 16	10:00 am – 3:00 pm
Tuesday, Feb. 20	10:00 am – 3:00 pm
Friday, Feb. 23	10:00 am – 3:00 pm
Tuesday, Feb. 27	10:00 am – 3:00 pm

### Please bring the following items with you to your appointment:

1. If filing a joint return, both parties must be present with photo identification.
2. If the taxpayer is homebound, a power of attorney should be presented for the individual. Contact the Marquette Senior Center for assistance.
3. A copy of your completed 2016 tax return.
4. Social Security cards for all persons on the return.
5. W-2 for all jobs worked.
6. 1099 INT. This shows interest earned this may also be shown on a 1099R.
7. 1099 DIV. This shows any dividends earned and may also be shown on a 1099R.

8. Written documentation of any self-employed business expenses and income including cash income.
9. 1099B – Capital gains or losses. You must have the cost basis of any stocks or mutual funds that were sold.
10. 1099R – showing any IRA distributions pensions or annuities.
11. 1099G – Unemployment compensation.
12. SSA 1099 – Social Security and railroad benefits.
13. 1099 MISC – any miscellaneous income.
14. W-2 G – Gambling winnings.
15. If you itemize deductions, you must have written proof of all deductions.
16. 1095A – this form will arrive if you purchased your healthcare insurance through the marketplace.
17. If you have an exemption from the Affordable Care Act you will need to provide the exemption certificate.
18. You must provide a blank or canceled check in the name of the taxpayer for us to obtain the correct routing and account information. An alternative would be a letter signed by a bank employee on bank stationary listing the routing and account numbers.
19. For the property tax credit, we need copies of the amount of property tax assessed for 2017 and the taxable value of the home. If you rent, we need to know the name and address to whom you pay rent and how much.
20. For the home heating credit, we need the amount you paid for heating during the year from your provider. If you heat with wood, we need to know the amount you paid for the wood.

### Returns AARP cannot do:

Rental income, farm credits, business except for CEZ forms, very complicated stock sales or other returns we are not comfortable or trained to complete.

## 2018 Elections

There are currently two elections scheduled in the City of Marquette during the coming year.

The first is a State primary election scheduled for Aug. 7. The ballot for this election will likely contain a number of statewide primary contests and may also include primary races for the Marquette Board of Light and Power and the Marquette City Commission. Monday, July 9 is the last day to register to vote in the August Election.

The year's final election will be held on Tuesday, Nov. 6 and is a State General Election. This ballot will include the City Commission and BLP contests, as well as a number of statewide races. Based on recent reporting, there could also be numerous ballot initiatives up for a vote in this mid-term election. Tuesday, Oct. 9 is the last day to register for the

November election.

The Marquette City Commission will have two seats opening up for election, as the current terms of Commissioners Jenna Smith and Mike Plourde both expire in November of 2018. Both are eligible to run for re-election.





## 2018 Noquemanon Ski Marathon

The Noquemanon Ski Marathon (also referred to as the “Noque”) is a point-to-point cross-country ski race from Ishpeming to Marquette. The race showcases the rugged and challenging terrain of northern Marquette County. It is known for its premiere snow conditions, remote course, and beautiful views. It is part of the American Ski Marathon Series and CXC Marathon Cup Series. In addition to the 50K and 24K Classic and Freestyle races, other events are held over the Noquemanon weekend including skijour, snowshoe and snowbike events.



## Farmers Market Year End Report



The Downtown Marquette Farmers Market has ended a successful season. The close of the 2017 Downtown Marquette Farmers Market season marked the end of the 10<sup>th</sup> year at its permanent location in the Marquette Commons. Since the move to the Commons, the Market, operated by

the Downtown Development Authority, has experienced unprecedented success and the 2017 season was no exception. The regular season opened May 20 and ran through Oct. 28, offering products from 56 seasonal vendors and 30 rotating daily vendors. The vendor offerings included fresh produce, eggs, meats, prepared foods and artisan offerings. The extended “Winter Market” hosted 40 vendors and ran through Dec. 16.

Throughout the 2017 regular season, the Market offered 11 food tasting demonstrations where several featuring local chefs demonstrated how they incorporate local produce into dishes they prepare in their restaurants. Along with weekly performances by local musicians, the market also partnered with various organizations to provide educational programming about products, nutritional benefits and new ways to prepare different items.

The economic impact of the market on the community is remarkable. Customer daily attendance during the regular market season averaged 2,200 with an estimated total count of 52,800 persons over the 24-week season. Estimated season sales at the market in 2017 were nearly \$1.6 million, including nearly \$19,000 in supplemental food nutrition program sales. The Market accepts Bridge Cards,

WIC Project Fresh, Senior Market Fresh and Double Up Food Bucks programs. The Market also hosted 10 farmers who participate in the “Hoophouses for Help” voucher program.

The Downtown Market employs a full-time certified Market Manager and participating farmers and vendors employ 296 people. A recent survey by the Michigan Farmers Market Association (MIFMA) indicates that 68 percent of the customers at the Market planned to do additional shopping and/or dining in the downtown area. The vendor fees for 2017 were \$150 per booth for the season and \$10 per day for rotating daily vendors. Total vendor fees paid for the season, including the Winter Market, were \$13,707. The total cost of operating the Farmers Market for 2017 totaled \$63,239. The DDA supplement to the market operations for 2017 was \$11,714. A USDA Farmers Market Promotion Fund grant in the amount of \$71,290, which expired in October 2017, was used during 2016 and 2017 to purchase an awning for the market kiosk, market banners, heaters and to help off-set advertising costs and the market manager payroll costs.

The Downtown Marquette Farmers Market was recognized by Lake Superior Magazine as “Best of the Lake,” listed as one of the “9 Best Farmers Markets in Michigan” by [bestthingsmi.com](http://bestthingsmi.com), and recognized by [onlyinyourstate.com](http://onlyinyourstate.com) as one of the “10 Incredible Farmers Markets in Michigan That Are A Must Visit.” The 2018 Market will reopen on Saturday, May 26, 9 a.m.-1 p.m.

See you at the Market!

## 2018 UP 200 Dog Sled Race



The UP200 is one of the top 12-dog mid-distance races in the Midwest, as well as being an Iditarod qualifier.

The UP200 trail covers 230 miles of challenging terrain from Marquette to Grand Marais, Michigan and back again through forested land and near-wilderness. Mushers face hills, creek crossings, deep snow and isolated trails. This is a true test of skill and stamina! The first leg of the trail is from Marquette to Wetmore, a distance of approximately 64 miles on the upbound leg, and 60 miles on the downbound leg.



The upbound timing gate at Wetmore is at Timber Products on M-28. The teams will cross M-28 "on the clock" with the State Police available to assist with traffic. The team will proceed to the upbound checkpoint at Timber Products. This is an assisted checkpoint except for teams using the race as an Iditarod qualifier. Because the teams will arrive after midnight, spectators will not be allowed inside the upbound Wetmore checkpoint. A dog may be dropped from the team



at this point and will be transported by truck to Grand Marais. The teams will leave from this area in the early morning on Saturday and re-join the trail to Grand Marais. From Timber Products, the trail winds through Pictured Rocks National Lakeshore and continues on to Grand Marais, approximately 51 miles. The Grand Marais checkpoint is the midpoint of the race, and offers excellent viewing opportunities for spectators. The local Community Center is the checkpoint headquarters, and visitors can have lunch, bid on items at a silent auction and see the teams up close. Here the mushers will rest and feed their teams, be checked over by vets and plan their strategy for the second half of the race.

A total rest time of 16 hours is required, and the mushers decide how much rest time they will use at each checkpoint.



A minimum five-hour rest is required at the Wetmore checkpoint on the upbound leg to Grand Marais, but after that, it is up to the musher to decide when and where to take the remainder of the rest.

The return to Marquette is over the same trail. On the downbound trail, Hiawatha Log Homes in Wetmore is the assisted checkpoint (a distance of 55 miles) and handlers may help the teams. The trail from Hiawatha Log Homes to the finish in Marquette is 60 miles. Dogs may be dropped from the team at any of the checkpoints. The UP200 ends on Sunday afternoon when the mushers cross the finish line in Marquette. This race is a test of the musher's skill in navigating and the team's stamina and fitness. If you're a musher, you won't want to miss it, and if you're a spectator, come join the thousands of people who gather to cheer the teams out of the starting gate in Marquette! The race starts on Friday evening, Feb. 16 and is limited to 40 teams, so mushers are encouraged to register early.

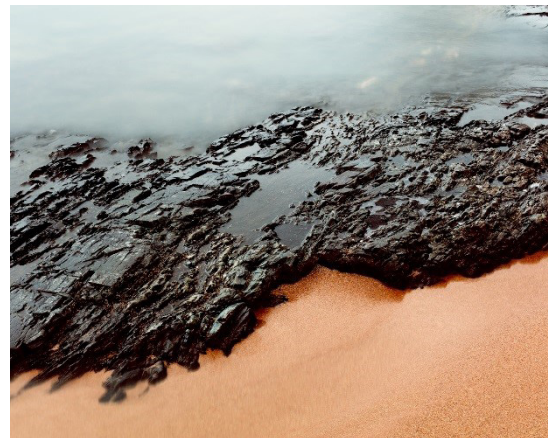


The City of Marquette Arts and Culture Center (MACC) is located in the lower level of the Peter White Public Library at 217 N. Front St. in Marquette. For more information or questions on any of the articles on this page or the following, please call 906-228-0472 or email [arts-culture@marquettemi.gov](mailto:arts-culture@marquettemi.gov).



## January Exhibits: Michael Zuhorski and Paul Nelson

The City of Marquette Arts and Culture Center announces its featured exhibitions for the month of January. The LSAA gallery will feature local photographer Michael Zuhorski. The exhibition, entitled "Eyes Make the Horizon", highlights Zuhorski's intention to create a body of photographs that responds to his sustained presence in the Northern



Great Lakes and speaks to his longstanding history and deeply personal sense of place within their landscape. This is coupled with the looming fact that, as a societal participant, he bears partial responsibility for the violence enacted upon this environment, and, through the creation of this work, he has found meaning in this tension. Zuhorski's work has been published internationally and exhibited widely in group shows, as well as in several solo shows in the midwestern United States.

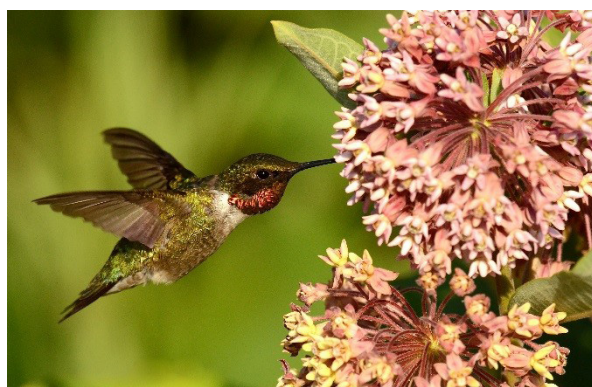


The January SmallWorks Gallery will feature the work of photographer Paul Nelson. The exhibition, "Anatomy of an Eclipse", features photographs of the 2017 total solar eclipse taken from Stapleton, Nebraska – a small town along the path of totality which Nelson chose based on travel time from Marquette and historical weather conditions. Nelson first learned about the total solar eclipse in August of 2016 and spent the next year planning and studying how to photograph the occasion. This exhibit is the result of those efforts. Nelson's main interest in photography is natural landscapes and wildlife as well as low light photography, and in his images he tries to capture the beauty of the world around us.

The shows will run from Jan. 3-27, with an artist reception on Thursday, Jan. 25 from 6 to 8 p.m. The public is invited to attend and refreshments will be provided. Michael Zuhorski will also be hosting an artist talk on Jan. 18, from 7 to 8 p.m. in the Marquette Arts and Culture Center.

## February Exhibits: Scot Stewart and Elsa Clement

The February LSAA gallery will feature "A Love of Nature, Up Close and Personal", a collection of photographs by local photographer and writer Scot Stewart. Stewart, a teacher at Bothwell Middle School, writes a weekly column for the Mining Journal on birds and a monthly article on a variety of Upper Peninsula natural history topics for the Marquette Monthly. His photographs accompany his writing, and have also appeared in a variety of museum exhibits, magazines, calendars and books. To Stewart, the beauty of nature brings a sense of joy and peacefulness we all need. "I savor the opportunities to immerse myself in that realm and save small parts to share with others, hoping the joy and peace will come to them as well."



The February SmallWorks Gallery will feature the work of Elsa Clark Clement. Her exhibit, "Upper Peninsula Wildlife: Sketches and Watercolors," features graphite sketches and watercolor paintings inspired by a lifetime of observing and appreciating the natural world. Clement, a retired teacher and local educator, taught AP Physics, Chemistry, Honors Biology and General Science at Marquette Senior High School before beginning to draw just three years ago. A Marquette native, she is the great-great-great-granddaughter of Amos Harlow. Her interest in nature began in her childhood growing up on Marquette's east side and exploring its miles of shoreline.

## 22nd Annual Art Awards, Call For Nominations

The City of Marquette is welcoming citizens to nominate deserving members of the community to be considered for the 2018 Annual Art Awards. These awards are offered to recognize and thank citizens who have demonstrated artistic excellence and/or have made significant contributions to awareness of arts in our community.

Nominations for the 22nd Annual Art Awards are being accepted for the following categories: Arts Volunteer, Arts Activist, Arts Educator, Youth Award, Visual Artist, Performing Artist, Special Recognition, Community Arts Impact, Art Business Honor Roll and Writer.

Nomination forms and criteria may be picked up at the City of Marquette Arts and Culture Center, located in the lower level of the Peter White Public Library at 217 N. Front Street, or found online at <https://goo.gl/1Yniqq>. Nominations will be accepted until Friday, March 16.

The Award recipients will be honored at a public ceremony in May. Please note that nominations for non-residents are welcome as long as the nominee has made contributions to the City of Marquette. A complete list of past award winners can be found at <https://goo.gl/3yPsWi>. For more information, contact the MACC at [arts-culture@marquettetmi.gov](mailto:arts-culture@marquettetmi.gov) or 906-228-0472.

## Request for Award Design Proposals

The City of Marquette Arts and Culture Center (MACC) is seeking proposals from area artists for the design and fabrication of the 22nd Annual Art Awards. The Awards are the most prestigious honor conferred by the City to individual artists, arts organizations, businesses and arts patrons who have made an outstanding impact on arts and culture. The selected artist will design and fabricate 10 identical awards to be presented at the ceremony and branded as the official award for the next several years.

The award proposal must be a three dimensional, free standing object easily handled by one person. Compensation for design and fabrication is \$800.00. Artists must submit: a resume or CV, a concept for proposed design including sketches and a narrative description. The artist must also submit three images (preferably on a disc, thumb drive or by email) that show the scope and breadth of their work.

Proposals are due by 5 p.m. on Friday Feb. 9, 2018. This is not a postmark deadline. Entries must be in the possession of the MACC by the deadline time and date. Late applications will not be considered. Proposals may be submitted in person or by mail at Marquette Arts and Culture Center c/o Arts Award, 300 W. Baraga Avenue, Marquette, MI 49855. Proposals can also be submitted via email to [tharris@marquettetmi.gov](mailto:tharris@marquettetmi.gov).

For questions about this RFP, please email [tharris@marquettetmi.gov](mailto:tharris@marquettetmi.gov) or call the Arts and Culture Manager at 906-225-8641.

## Felting with Marikah

Saturday, Jan. 27, 10:30 a.m.-4:00 p.m.

\$55 Registration Fee

To register, contact Masha Kakhova at [4marikah@gmail.com](mailto:4marikah@gmail.com) or 248-556-6839.

Participants will use superfine merino wool and other natural fibers to make a beautiful felted wavy scarf as well as learn about different types of wool fibers, tools and techniques. Most tools and materials will be provided, but please inquire about additional materials needed when registering.



All classes take place at the City of Marquette Arts and Culture Center, located in the lower level of the Peter White Public Library.

The Creative Community Series is made possible by grant funding from the Michigan Council for Arts and Cultural Affairs. To learn more about how to host your own workshop or for any questions regarding the series, contact the Art Center at 906-228-0472 or [arts-culture@marquettetmi.gov](mailto:arts-culture@marquettetmi.gov).

## Rising Grace Yoga with Anna Grace

Wednesdays, Jan. 3 – Feb. 21

Preschool Yoga (Ages 2-4): 10:15 a.m. - 11:00 a.m.

Kids Yoga (Ages 5-8): 4:15 p.m. - 5:00 p.m.

Preteen Yoga (9-12): 5:15 p.m. - 6:00 p.m.

\$10 per class, \$80 total

To register, please visit [www.RisingGraceYoga.com](http://www.RisingGraceYoga.com)



## Ice Safety Tips provided by the Marquette Fire Department



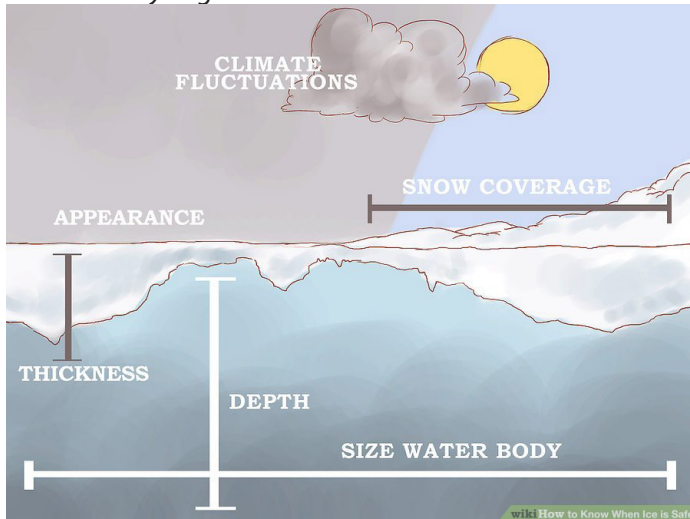
If you head out to one of Michigan's many lakes or rivers to ice fish, snowmobile, ATV, cross-country ski or just to enjoy a winter day, we want you to have fun and be safe. A bit of advanced planning and practicing basic ice precautions can help you return home safely.

Bundle up for cold weather!

### When is ice safe?

There really is no sure answer and no such thing as 100 percent safe ice. You cannot judge the strength of ice by one factor like its appearance, age, thickness, temperature or whether the ice is covered with snow. Ice strength is based on a combination of several factors and can vary. Ice strength can also vary in different areas of the same body of water.

### Know before you go



Because ice conditions vary, it is important to know before you go. Local bait shops, fishing clubs and resorts serve winter anglers everyday and often have the most up-to-date information on how thick the ice is on local lakes and rivers, as well as areas that are especially dangerous.

### Safety tips

- Dress warmly in layers.
- Don't go alone. Head out with friends or family. Take a cell phone if available, and make sure someone knows where you are and when you are expected to return.
- Know before you go. Don't travel in areas you are not familiar and don't travel at night or during reduced visibility.
- Avoid inlets, outlets or narrow channels that may have currents that can thin the ice.

- Look for clear ice, which is generally stronger than ice with snow on it or bubbles in it.



- Carry some basic safety gear: ice claws or picks, a cellphone in a waterproof bag or case, a life jacket and length of rope.

### What to do if you fall through ice

If you fall through the ice, remain calm and act quickly.

1. Do not remove your winter clothing. Heavy clothes can trap air, which can help provide warmth and flotation. This is especially true in a snowmobile suit.
2. Go back toward the direction you came. That is probably where you will find the strongest ice – and what lies ahead is unknown.
3. Place your hands and arms on the unbroken surface. This is where a pair of nails, sharpened screwdrivers or ice picks are handy in providing the extra traction you need to pull yourself up onto the ice.
4. Kick your feet and dig in your ice picks to work your way back onto the solid ice. If your clothes have trapped a lot of water, you may have to lift yourself partially out of the water on your elbows to let the water drain before starting forward.
5. Once back on the ice, don't try to stand up. Lie flat until you are completely out of the water, then roll away from the hole to keep your weight spread out. This may help prevent you from breaking through again.



6. Get to a warm, dry, sheltered area and warm yourself up immediately. In moderate to severe cases of cold-water hypothermia, you must seek medical attention. Cold blood trapped in your extremities can come rushing back to your heart after you begin to warm up. The shock of the chilled blood may cause ventricular fibrillation leading to a heart attack and death!

# 2018 Curbside Collection Schedule:

FIBERS

RIGIDS

Under the dual-stream system, fiber and rigid materials are collected on alternating weeks. Simply place a bin of the selected materials at your curb at the same time you routinely set your garbage out.

## JANUARY

S	M	T	W	R	F	S
31	1	2	3	4	5	6
7	8	9	10	11	12	13
14	15	16	17	18	19	20
21	22	23	24	25	26	27
28	29	30	31	1	2	3
4	5	6	7	8	9	10

## FEBRUARY

S	M	T	W	R	F	S
28	29	30	31	1	2	3
4	5	6	7	8	9	10
11	12	13	14	15	16	17
18	19	20	21	22	23	24
25	26	27	28	1	2	3
4	5	6	7	8	9	10

## MARCH

S	M	T	W	R	F	S
25	26	27	28	1	2	3
4	5	6	7	8	9	10
11	12	13	14	15	16	17
18	19	20	21	22	23	24
25	26	27	28	29	30	31
1	2	3	4	5	6	7

## APRIL

S	M	T	W	R	F	S
1	2	3	4	5	6	7
8	9	10	11	12	13	14
15	16	17	18	19	20	21
22	23	24	25	26	27	28
29	30	1	2	3	4	5
6	7	8	9	10	11	12

## MAY

S	M	T	W	R	F	S
29	30	1	2	3	4	5
6	7	8	9	10	11	12
13	14	15	16	17	18	19
20	21	22	23	24	25	26
27	28	29	30	31	1	2
3	4	5	6	7	8	9

## JUNE

S	M	T	W	R	F	S
27	28	29	30	31	1	2
3	4	5	6	7	8	9
10	11	12	13	14	15	16
17	18	19	20	21	22	23
24	25	26	27	28	29	30
1	2	3	4	5	6	7

## JULY

S	M	T	W	R	F	S
1	2	3	4	5	6	7
8	9	10	11	12	13	14
15	16	17	18	19	20	21
22	23	24	25	26	27	28
29	30	31	1	2	3	4
5	6	7	8	9	10	11

## AUGUST

S	M	T	W	R	F	S
29	30	31	1	2	3	4
5	6	7	8	9	10	11
12	13	14	15	16	17	18
19	20	21	22	23	24	25
26	27	28	29	30	31	1
2	3	4	5	6	7	8

## SEPTEMBER

S	M	T	W	R	F	S
26	27	28	29	30	31	1
2	3	4	5	6	7	8
9	10	11	12	13	14	15
16	17	18	19	20	21	22
23	24	25	26	27	28	29
30	1	2	3	4	5	6

## OCTOBER

S	M	T	W	R	F	S
30	1	2	3	4	5	6
7	8	9	10	11	12	13
14	15	16	17	18	19	20
21	22	23	24	25	26	27
28	29	30	31	1	2	3
4	5	6	7	8	9	10

## NOVEMBER

S	M	T	W	R	F	S
28	29	30	31	1	2	3
4	5	6	7	8	9	10
11	12	13	14	15	16	17
18	19	20	21	22	23	24
25	26	27	28	29	30	1
2	3	4	5	6	7	8

## DECEMBER

S	M	T	W	R	F	S
25	26	27	28	29	30	1
2	3	4	5	6	7	8
9	10	11	12	13	14	15
16	17	18	19	20	21	22
23	24	25	26	27	28	29
30	31	1	2	3	4	5

\*Please note that glass will no longer be a recyclable material as of Jan. 1. Please place all glass into your regular garbage

## Important Information

- You can also take your recycling to Waste Management located at 910 W. Baraga Avenue.
- You will be able to deposit your recycling into the large containers out front; it is not necessary to separate materials at this location.

### Marquette Matters, Volume 8, Issue No.1

Marquette Matters, published bimonthly by the City of Marquette, is available to all residents and businesses online at [www.marquettemi.gov/newsletter](http://www.marquettemi.gov/newsletter). To sign up for our email list or for story ideas please email [marquettematters@marquettemi.gov](mailto:marquettematters@marquettemi.gov). Any individuals who would like to receive the information in this publication in another format may contact the Marquette Matters newsletter at [marquettematters@marquettemi.gov](mailto:marquettematters@marquettemi.gov), or the City Manager's Office at 906-228-0435.