



*Marquette*  
[www.marquettemi.gov](http://www.marquettemi.gov)

CITY OF MARQUETTE

# 2024 Voter Education Guide

City Clerk's Office  
300 W. Baraga Ave  
Marquette, MI 49855  
906-228-0430 | [clerk@marquettemi.gov](mailto:clerk@marquettemi.gov)

# LETTER FROM THE CLERK

Dear City of Marquette Voter,

The purpose of this guide is to provide you with education, resources, and up-to-date information about elections in the City of Marquette.

This guide seeks to highlight information about upcoming elections and it provides answers to some of the most commonly asked election questions that we hear in our office.

Additionally, it includes information about recent precinct consolidation, changes in polling locations, and the various options voters have when casting a ballot in the City.

Finally, this guide provides information on how to register to vote in the City, as well as how to get involved in local elections in a more hands-on manner. Our office is always looking for residents interested in serving as election workers.

If, after reading through this Voter Education Guide, you have unanswered questions -- or if you just want to talk about Michigan Elections -- please don't hesitate to contact us directly.

Best,

Kyle Whitney  
Marquette City Clerk

# 2024 ELECTION CYCLE

- **Presidential Primary: February 27**
  - **Early Voting: February 17 - February 25**
- **State Primary: August 6**
  - **Early Voting: July 27 - August 4**
- **Presidential Election: November 5**
  - **Early Voting: October 26 - November 3**

Early Voting

8:00 a.m. - 4:00 p.m. at the Peter White Public Library

Election Day Polls are Open

7:00 a.m. - 8:00 p.m.

The City Clerk's office will be available the Saturday before election day from 8:00 a.m. - 4:00 p.m. at the Peter White Public Library for election purposes.

Additional details about voting options in the City of Marquette, including the schedule for early voting, can be found at [www.marquettemi.gov/vote](http://www.marquettemi.gov/vote)

# PRECINCT CONSOLIDATION

Recent changes to state law limited the number of registered voters residing in a single election precinct to 4,999. Prior to this, the limit was set at 2,999.

This shift created some options for local precinct alignments, and the City Election Board and City Commission in December cast unanimous votes to amend the city's precinct boundaries and polling locations.

Previously there were 7 precincts across 3 Election Day polling locations; moving forward, the City will have 4 precincts and 2 polling locations.

The City Clerk recommended precinct consolidation in an attempt to utilize limited election resources as efficiently and responsibly as possible.

By consolidating precincts, the City of Marquette will save money on facilities, election equipment and supplies and will also be able to allocate staff more effectively across Election Day precincts, absent voter counting boards and early voting locations.

# NEW PRECINCT CONFIGURATION

Voters whose precincts or polling location have changed will receive a new Voter ID card in the mail.

## Old Precinct

## New Precinct

**1 & 3**



**1**

**2**



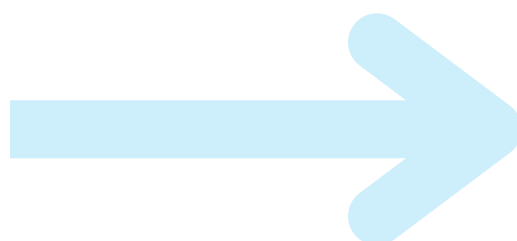
**2**

**4 & 5**



**3**

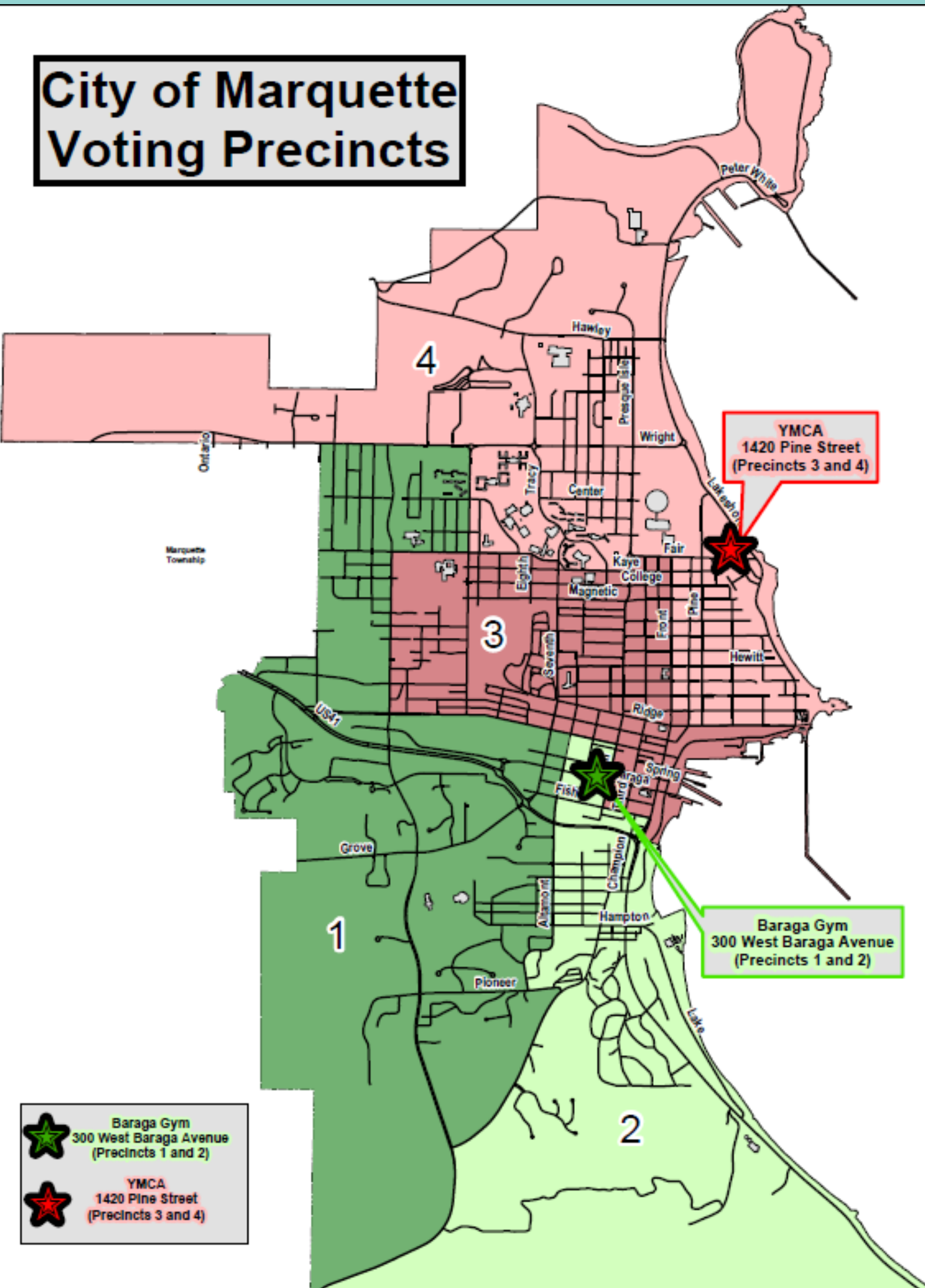
**6 & 7**



**4**



# NEW PRECINCT MAP

## City of Marquette Voting Precincts



YMCA  
1420 Pine Street  
(Precincts 3 and 4)

Baraga Gym  
300 West Baraga Avenue  
(Precincts 1 and 2)

-  Baraga Gym  
300 West Baraga Avenue  
(Precincts 1 and 2)
-  YMCA  
1420 Pine Street  
(Precincts 3 and 4)

# THREE WAYS TO VOTE

## OPTION ONE

# In Person On Election Day

**Polls are open 7 a.m. - 8 p.m. on election day.**

Vote at your assigned precinct as noted on your Voter ID Card or check [www.mi.gov/vote](http://www.mi.gov/vote) for precinct location.



### **Polling Locations**

#### **Precincts 1, 2**

City Hall, Baraga Gym  
300 W. Spring Street

#### **Precincts 3, 4**

YMCA of Marquette County  
401 E. Fair Ave



The Municipal Service Center is no longer a City polling location

# THREE WAYS TO VOTE

## OPTION TWO

### In Person Early

Any voter registered in the city of Marquette can vote during the 9-day early voting period in all state and federal elections. The City of Marquette plans to offer a limited early voting schedule for all other, local, elections.

The **Peter White Public Library**, located at 217 N. Front Street, has been selected as the early voting site for the City of Marquette.



Additional details about voting options in the City of Marquette, including the schedule for early voting, can be found at [www.marquettemi.gov/vote](http://www.marquettemi.gov/vote).





# THREE WAYS TO VOTE

## OPTION THREE

### Absentee Ballot

Any registered voter can vote via absentee ballot.

There are 2 steps to this process:

1. Submit a signed request for an absentee ballot.
2. Return your voted ballot with the return envelope sealed and signed.

Absentee Ballot Applications can be obtained:

- Online at [www.mi.gov/vote](http://www.mi.gov/vote)
- By phone request to the Clerk's office
- In person at the Clerk's office

Permanent Absentee Ballot Voters

- Voters who want to automatically receive a ballot for all future elections may sign up for the Permanent Absent Voter List when submitting an Absent Voter Ballot Application or by contacting the Clerk's Office.



**THE OUTSIDE OF THE BALLOT ENVELOPE MUST BE SIGNED BY THE VOTER**

**Absentee Ballots DO NOT forward. If you will not be at your registered address, please let the Clerk's office know where you need your ballot mailed.**

# RETURNING YOUR ABSENTEE BALLOT

**1) Vote Your Ballot**

**2) Sign and Seal The Envelope**

**3) Return Your Ballot by 8 p.m. on Election Day  
in one of the following ways:**

- Mail: Return postage provided, NO STAMP NECESSARY
  - When mailing your ballot from a local address, we recommend it is mailed by the Friday before election day.
  - When mailing your ballot from a location other than the city, we recommend you plan to mail your absentee ballot at least two weeks prior to election day.
- In-person at the Clerk's office, 300 W. Baraga Ave
  - Our office is open 7:30 a.m. - 4:30 p.m., Monday through Friday
- One of three drop boxes:
  - Lakeview Arena
  - Municipal Service Center
  - City Hall

**VOTERS NOW HAVE THE  
OPTION TO TABULATE THEIR  
ABSENTEE BALLOT AT THEIR  
EARLY VOTING SITE OR AT  
THEIR PRECINCT ON  
ELECTION DAY**

# BALLOT DROPBOX LOCATIONS

1

Municipal Service Center  
1100 Wright St.



2

Lakeview Arena  
401 E. Fair Ave.



3

City Hall  
300 W. Baraga Ave.



# LIFE CYCLE OF YOUR ABSENTEE BALLOT



Request Your Absentee Ballot



Sign and Return Your Application

If you have previously added yourself to our Permanent Ballot List, there is no need to fill out a new application, and you will automatically receive your absentee ballot



When an application is received, the Clerk's office will verify your information prior to mailing your ballot.



Track Your Application and Ballot online at [mi.gov/vote](https://mi.gov/vote)



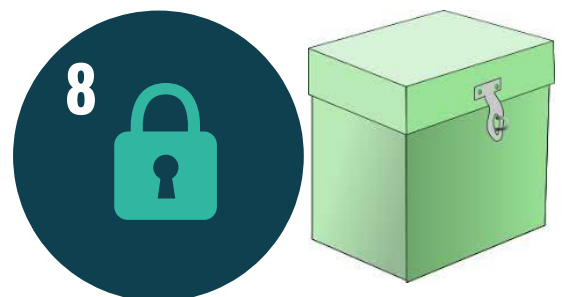
Vote Your Ballot, Sign and Seal the Envelope, Then Return



Ballot is received in the Clerk's office. Your signature is verified. Ballots are securely stored until processing.



The Absent Voter Counting Board opens all absentee ballot envelopes and tabulates the votes. Ballots remain anonymous, with election staff from both parties working to process your ballot, while ensuring secure and accurate tabulation.



Ballots are maintained in a certified container under seal for the State's required retention period.

# THINGS TO KNOW

## FEBRUARY 27 PRESIDENTIAL PRIMARY

**You will be asked to select a party ballot (Republican or Democrat).**

The State of Michigan does not require voters to identify with a party at the time they register to vote. However, state law requires that Michigan's Presidential Primary ballots be party-specific, and voters may only vote in one party. Therefore, you must make a party selection before receiving a ballot.

No matter the method you choose to cast your ballot, you will be asked to make a party selection.

If you are a voter on the permanent ballot list you will receive a ballot selection from. Voters who receive an absentee ballot application will make their ballot selection on their application.



# THINGS TO KNOW

## FEBRUARY 27 PRESIDENTIAL PRIMARY

**If you plan to vote early or by absentee ballot keep in mind candidates may decide to drop out of the race.**

The deadline to spoil an absentee ballot that has already been returned to the Clerk's office is February 16. After February 16, voters that have already returned their ballot cannot spoil it and request a new absentee ballot.

If you choose to vote in person early, once your ballot has been tabulated, you have voted and your ballot can't be spoiled.

This is important because some candidates may drop out of the race. If the candidate you voted for drops out of the race after the absentee ballot spoilation deadline or after you voted early in-person you will not be able to get a new ballot.





# POLLING PLACE

## RULES AND ETIQUETTE

Help precincts operate safely and smoothly



### Have Your Photo ID Ready

Options:

- Driver's License
- State Issued ID
- Current Passport
- Student ID
- Military ID
- Tribal ID



(If you do not have a photo ID with you, you will be asked to sign an affidavit)

### Use Phones Respectfully

- Permitted while waiting in line, so long as you're not disruptive

### Limit the Photos

- Photography is permitted **only** if you are taking a photo of your own voted ballot lying flat in a voting booth.

### Bring Your Kids

- Michigan Election Law (MCL 168.736a) provides that a "minor child may accompany an elector in the booth or voting compartment at an election."



### Campaign

Within 100 feet of the entry doors:

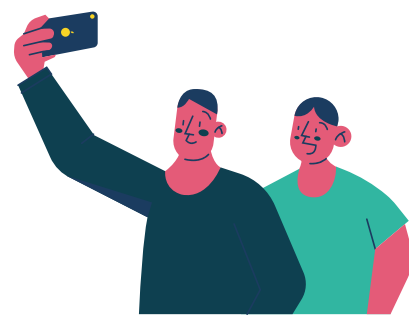
- No Signs
- No Soliciting Votes or Signatures
- No Campaign Merchandise (shirts, hats, pins, etc.)

### Phone Usage in the Booth

- Voters are not permitted to communicate with others while in a voting booth.
- Voters may access notes on a phone or electronic device while voting.

### Photograph Anything Else

- Photos of people - including yourself - are not permitted.
- Photos of your voted ballot may not be shared via social media or other means until after you exit the polling location.



# PROPOSAL 2022-2

**In November of 2022 voters passed Proposal 2, which added several new clauses pertaining to voting and elections to the Michigan Constitution. This will make an impact on how future elections are administered.**

Prop 2 -- which passed with 77.3% of City voters casting a ballot in support (Marquette County: 67.3%; Statewide: 60%) -- enshrined in the Michigan Constitution the right to at least 9 days of early voting in all statewide and federal elections. Subsequent legislation has provided further options for expanded early voting offerings.

Additionally, voters now have the right to add their names to a permanent ballot list, and to then receive an absentee ballot for all future elections.

In 2023, the Michigan Legislature passed a package of election-related bills, aimed at providing clerks with a framework for the implementation of Prop 2.

- Early Voting: SB 367
- Absent Voter Tracking: SB 339
- Permanent Mail Ballot List: HB 4699
- Signature and Cure: SB 370
- In-Person Identification: SB 373
- Drop Boxes: HB 4697
- Increases Precinct Size: HB 4702
- Criminal Penalties for Disclosure of Early Voting Result: HB 4696



# FREQUENTLY ASKED QUESTIONS

- **Who is eligible to vote in Michigan?**
  - You must be a U.S. citizen
  - You must be at least 18 years of age by Election Day
  - You must be a resident of the city or township where you are applying to vote for at least 30 days prior to Election Day
  - You cannot be serving a sentence in jail or prison
- **What is on my ballot?**
  - <https://www.mi.gov/vote>
- **When can I register to vote?**
  - Eligible citizens may become registered to vote in a variety of ways, at any time through Election Day.

# FREQUENTLY ASKED QUESTIONS

- **Where can I register?**

- Within 14 days of an election, and on Election Day, voters may only register by visiting their local clerk's office to register in person and must provide proof of residency
  - If you have a Michigan Driver's License or State ID card that includes the residential address at which you are registering, you need nothing else
  - If you have an out of state ID or if your ID does not include the residential address at which you are registering (or if you are using a Passport, Military ID, Tribal ID or Student ID) you will need additional proof of residency



Additional proof of residency must include your name and the address at which you are registering, and can include:

- Utility Bill
- Bank Statement
- Pay Stub
- Government Check
- Other Government Document
- Lease Agreement

# FREQUENTLY ASKED QUESTIONS

- **Where can I register?**

- If there are 15+ days before an election, individuals can register to vote online, by mail or in person. Residents can apply for registration using an application obtained at one of the following locations:



- A Secretary of State branch office
- A local county, city or township clerk's office
- Offices of several state agencies, like the Department of Health and Human Services, the Department of Community Health and the Department of Licensing and Regulatory Affairs
- Military recruitment centers
- Voter registration drives
- [Online at www.Michigan.gov/vote](http://www.Michigan.gov/vote)

# FREQUENTLY ASKED QUESTIONS

- **How can I confirm that I am registered and find my polling location?**
  - Check online: <https://www.mi.gov/vote>
  - Call the City Clerk's office at 906-228-0430
- **What should I do if I have an address or name change?**
  - If you move within a city or township, you must update your address through your local clerk, at a Secretary of State branch office or by mail.
  - If your name changes, you must update your registration through the Secretary of State. Name changes cannot be processed by the local clerk.
- **Do I need a picture ID to vote at the polls?**
  - By law, every Michigan voter must either present picture identification at the polls or sign an affidavit attesting that he or she is not in possession of picture identification. A ballot cannot be issued to a voter unless the voter produces picture identification or signs the affidavit.

# HOW TO GET INVOLVED WITH ELECTIONS

The City Clerk's office is always seeking civic-minded, qualified citizens to serve as paid election inspectors.

Election inspectors must be registered to vote in the state of Michigan or they must be a student (ages 16-17). City of Marquette election inspectors do not need to be a registered voter in the City of Marquette.

Inspectors must attend a mandatory (paid) certification class prior to Election Day.

Election inspectors should be detail-oriented, friendly and interested in the process. Pay starts at \$13.23 per hour.

To apply, please complete the online application at [www.marquettemi.gov/electionworker](http://www.marquettemi.gov/electionworker)



# ADDITIONAL RESOURCES



- **City of Marquette**
  - [www.marquettemi.gov/vote](http://www.marquettemi.gov/vote)
- **State of Michigan**
  - [www.mi.gov/vote](http://www.mi.gov/vote)
- **League of Women Voters**
  - <https://lwvmqt.org/>
- **Vote 411**
  - <https://www.vote411.org/michigan>
- **Michigan Election Law**
  - <https://www.legislature.mi.gov/>